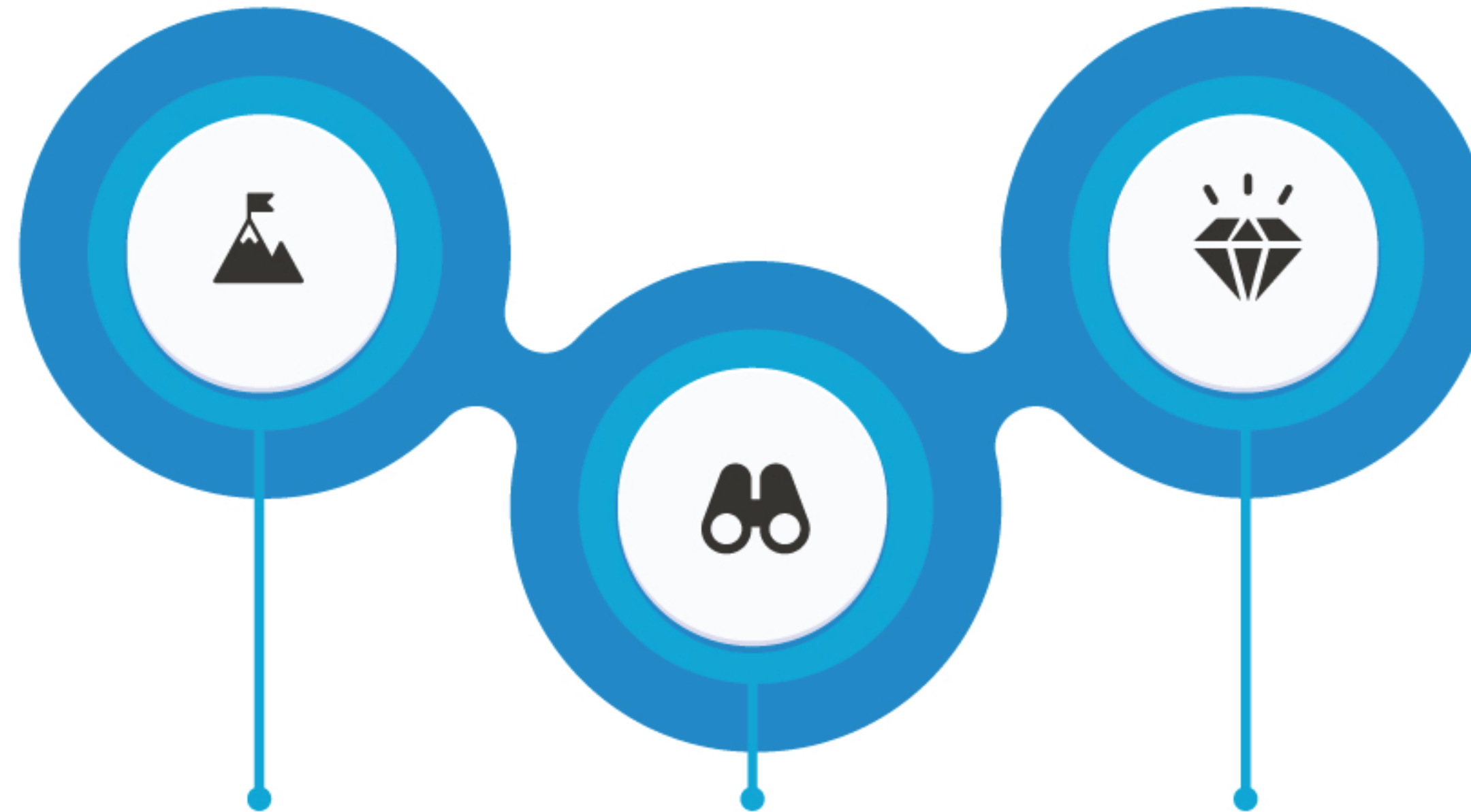




Upgrade your space effortlessly with **Chemibuild!**



Vision

To become the world most trustable brand in Overall field like - architecture, engineer, builders, applicators and many more.

Mission

Our aim at all times is to be a valued partner to our staff, customer, vendors and suppliers by offering added value sometime.

Core values

- Innovation
- trustworthiness
- Customer satisfaction
- Make a difference product

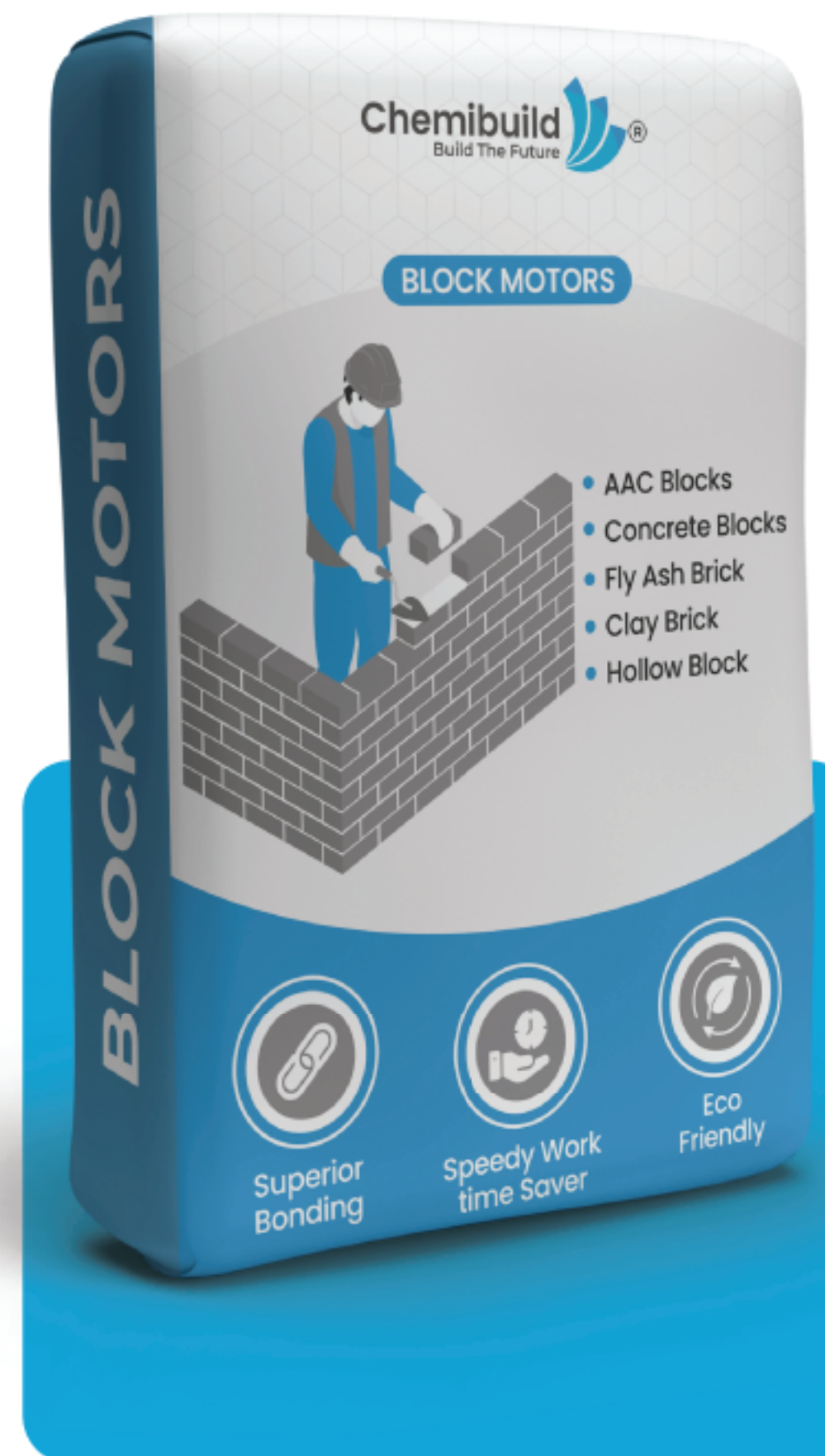


**CHEMI BLOCK
MOTER**



ADVANTAGES

- Curing free-water save.
- No shrinkage cracks.
- Superior bonding.
- Economic.
- Excellent high strength.



DESCRIPTION

Chemi block moter is redy to use,high perfomance,nonshrink,-self-curing,superiror water-resistant cement-based block adhe-sive specially formulated for joining block.chemi blockmoter ad-hesive is specially designed & manufactured for excellent adhe-sion strength,higher durability and superior bonding quality to the joined block.this unque combination provide stronger thinner and versatile thin bed jointing mortar.

COVERAGE

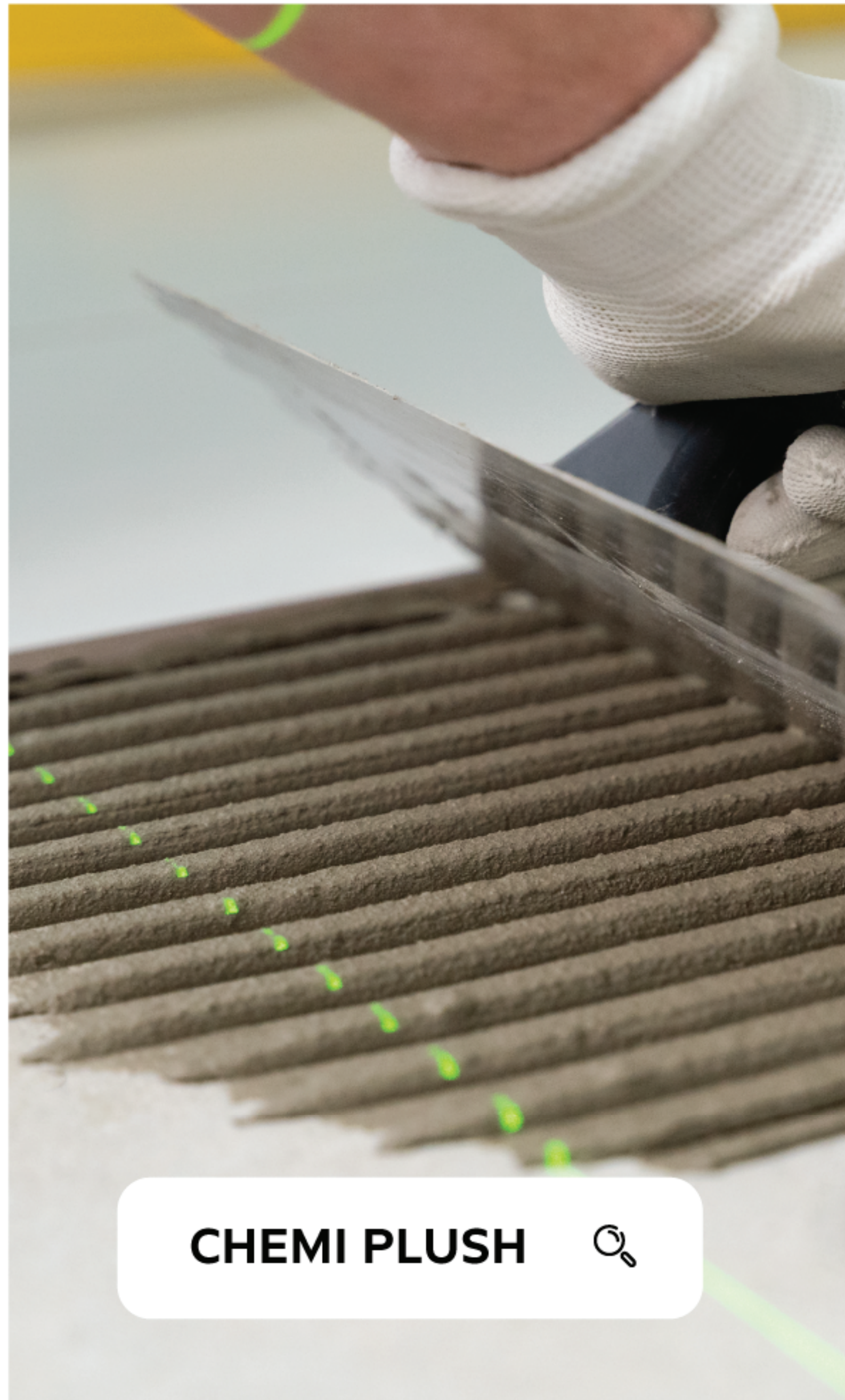
(block L+ adhesive thi.) + (block height + adhesive thickness)
=kg/m2

PACK SIZE

40kg.

STORAGE AND SHELF LIFE

M 15 has a shelf life of 12 month if kept in a dry clean store be-tween 5c and 45c in the original unopened containers.the product should be protected from frost ,away from direct sunlight and sources of heat.



ADVANTAGES

- Excellent adhesion.
- Excellent workability.
- Highbond strength.
- Suitable for most common substrates and tiles.
- Easy mixing, smooth application & better workability.
- Ideal for under floor heating appl.
- Self-curing.



DESCRIPTION

High Performance Enhanced Cement Based Adhesive For Tiles & Natural Stone.

High Polymer modified cementitious tile adhesive with improved adhesion it is a high adhesion strength, thixotropic tile/stone adhesive with extended open time and reduced slip suitable for bonding porcelain tile, vitrified tiles, natural stones, mosaic etc. on both floors and walls in internal & external areas.

NOTE

not recommended for direct use onto gypsum plaster (wall finishes) paint or metal.

STANDARDS

Confirms to IS 15477:2019. Type 2T "adhesive for use with ceramic, mosaic and stone tiles".

Conforms with the requirements of EN 12004:2017 and is a normal setting (1) slip resistant (T) cementitious adhesive (C) of class to CIT.

COVERAGE

3mm bed thickness-approx 3kg/m²
6mm bed thickness-approx 6kg/m²

PACK SIZE

20kg & (50 kgs bag for project supply).

STORAGE AND SHELF LIFE

chemi plush has a shelf life of 12 months when stored in normal dry conditions.



CHEMI STAR



ADVANTAGES

- Excellent Workability.
- High Bond Strength.
- Self-Curing.
- Resistant To Weather Conditions.
- Suitable For Wall And Floor
- Suitable For Various Ceramic, Vitrified Tiles & Substrates.



DESCRIPTION

Polymer Modified Grey Cement Based Genral Purpose Adhesive Having Excellent Application Properties With High Bond. Strength Use For Fixing Terracotta And Ceramic Tiles On Both Interior Floor And Wall In Dry Areas On Cementitious Substrate Also Suitable For Installing Porous Natural Stone On Interior Floors Only.

NOTE

Not Recommended For Direct Use Onto Gypsum Plaster (Wall finishes), Paint Or Metal.

STANDARDS

Confirms To Is 15477:2019 Type1T Adhesives For Use With Ceramic , Mosaic And Ston Tiles. Confirms To EN12004:2017 And Is Noramal Set Cementitious Adhesive (C1) With Silp Resistance (T) Of Class (1T).

COVERAGE

3MM Bed Thickness Approx 3Kg/m²
6MM Bed Thickness Approx 6Kg/m²

PACK SIZE

20Kg
50Kg (For Projekt Supply Only)

STORAGE AND SHELF LIFE

Chemi Star Has A Shelf Life Of 12 Months When Stored In Normal Dry Conditions.



ADVANTAGES

- Very high bond strength.
- No vertical silp.
- Excellent dual binding power.
- Water resistant.
- Deformable to accommodate minor shocks.



DESCRIPTION

High performance highly polymer modified cementitious adhesive based on high strength hydraulic binders selected aggregates, latest generation additives for both interior and exterior areas on both horizontal and vertical surfaces it complies with IS:15477 2019 cementitious adhesive with improved characteristics no vertical slip and extended open time ti is specifically developed for thin-medium layer bonding of vitrified tiles glass mosaic and stone material including large formats.

NOTE

note recommended for direct use onto gypsum plaster (wall finishes) paint of metal.

STANDARDS

Confirms to IS:15477:2019 Type3T "specification for adhesive for use with ceramic, mosaic and stone tiles"

Confirms to EN:12004:2017 and is and is an improved cementitious adhesive (C2) with slip resistance (T) and extended open time (E) of class C2 TE.

COVERAGE

3mm bed thickness-approx 3kg/m²

6mm bed thickness-approx 6kg/m²

PACK SIZE

20kg & (50 kags bag for project supply)

STORAGE AND SHELF LIFE

Chemi stone (grey) has a shelf life of 12 months when stored in normal dry conditions.



**CHEMI ULTRA
WHITE** 

ADVANTAGES

- Very high performance strength.
- Flexible adhesive.
- Premium multi use adhesive.
- Excellent water and frost resistance.
- Excellent tensile & shear adhesion.
- Easy mixing, smooth application & better workability.



DESCRIPTION

White cement based water & frost resistant high polymer modified high strength adhesive for fixing tile and stone on wall/floor in interior/exterior situations upto 6mm bed thickness (can be extended up to 12mm in area of limited extent) the set adhesive is water-resistant and suitable for use in swimming pools.

Chemi ultra white is used for fixing ceramic, vitrified & fully vitrified tiles, glass mosaic, procelain, terrazzo-meta or glass tiles non staining natural stone and engineered stone.

STANDARDS

Confirms to IS:15477:2019 Type4T S1 "specification for adhesive for use with ceramic, mosaic and stone tile.

Confirms to EN 12004:2017 and is a improved cementitious adhesive (C2)with slip resistant (T)extended open time (E) deformable (S1)of class C2TE S1

COVERAGE

6mm bed thickness-approx 6kg/m²

PACK SIZE

20kg &(50 kags bag for project supply)

STORAGE AND SHELF LIFE

Chemi ultra white has a shelf life of 12 months when stored in normal dry conditions.



DESCRIPTION

Chemibuild SBR Is Based on Styrene Butadiene Rubber, Special Adhesive And Bonding Chemicals Along With Hydrophilic Agents. Chemi build SBR Give A Versatile Performance In Many Civil Engineering Applications. The Product Is A Milky White Liquid.

COVERAGE

Bonding Agent: 1.75 m²/L/Coat.

WaterProofing: 1.75 m²/L/Coat.

PACK SIZE

1 Liter, 5 Liter, 20 Liter, 200 Liter.

STORAGE AND SHELF LIFE

One Year When Stored As Recommended In Original Packing In A Cool And Dry Place Above 5*c.

ADVANTAGES

- Chemibuild SBR Is A Superior WaterProofing Product.
- It Is Very Easy To Use And Is Nontoxic. Chemi Build SBR Poses No Environmental Hazards.
- Chemi Build SBR Is Successfully Used As A Primer To Brick Bat Coba Systems On Terraces.
- Chemi Build SBR Is Economical Than Many Similar Products Yet Gives Multifold Advantages.
- Chemi Build SBR Makes Mortars Non Shrink, Strong And Dust Proof.



CHEMPOXY HP 

APPLICATION

- Bathrooms, Wet Areas.
- Kitchens, Restaurants.
- Laboratories, Hospitals.
- Swimming Pools & Water Parks.
- School.
- Cafeterias.
- Rest Rooms.



DESCRIPTION

Chempoxy HP-07 Stainfree Grout Is An Epoxy Grout Specifically Designed For Use In Applications Of Ceramic Tile, Vitrified Tile And Stone Where Staining Is Expected.

COVERAGE

Please Refer The Coverage Chart As It Depends On The Tile Size, Joint Width And Depth.

PACK SIZE

Unit	Net Weight.
1/5th Unit.	1.0 kg.
1 Full Unit.	5.0 kg.

STORAGE AND SHELF LIFE

Factory Sealed Containers Of This Product Are Guaranteed To Be Of First Quality For Tow (2) Years If Stored At Temperatures >32* F (OC) And <110* f (43*C).

ADVANTAGES

- Stainfree.
- Colour-Fast.
- Easy To Install And Clean.
- Chemical And Temperature Resistant.
- Non-Cracking Or Powdering.
- Water Cleanable When fresh.
- Available In Rang of Attractive Colors.



Thanks you

 **MITUL BHAI**
+91 99980 86800

 **BONIKUMAR**
+91 9614961468

 **WEBSITE**
www.chemibuild.com

 **EMAIL**
customer@chemibuild.com

 **ADDRESS**

Por Industrial Park, B/h. sahyog Hotel,
Por - 391243, Gujarat, INDIA